


Extractive Materials Management

Questionnaire in regard to implementation of SI 566 of 2009

Operating Company	Keegan Quarries	
Name of site	Trammon Quarry	
Local Authority Operating Area		
Address of Site	Trammon, Rathmoylon, Co Meath, Ireland	
Grid Reference	677496 _E , 749889 _N	
Contact Name	John Keegan	
Contact Address (if Different from above)	Same as above	
Contact telephone number	+353 (0)86 2560213	
Contact email	john@keeganquarries.com	
Primary mineral(s) produced at the site	Waulsortian Limestone deposited in the Carboniferous	
Extractive materials assessed as waste	Inert, non-polluting materials comprising stripped soils, overburden and out-of-specification aggregates tips in Tip	
Extractive materials assessed as not waste		
Maximum storage time of any extractive material before final deposit	Indefinite (and in excess of three years). All out of specification material and overburden to be returned to quarry void at cessation of workings in accordance with an appropriate Restoration Plan	
Expected date for completion of operations at the site	Circa 2058 dependent on future production rates and market conditions	
Description of Operations	Using a 10m-reach 360° excavator, blasted rock belonging to the Waulsortian Formation is loaded directly into a mobile crusher where it is then screened into a series of single size products.	
Description of operations	Extractive material	Volume (m ³)
Extractive materials produced	Aggregates	3,705,000
	Stripped soils, overburden and out of specification aggregates	338,000
Description of the use of the use of extractive materials	All extractive waste is currently stored in the Northern Tip. During the life of the quarry, this material will be moved to the southern margin of the quarry and stored within the newly created void	
Description of areas for temporary storage of extractive materials	All extractive waste is currently stored in the Northern Tip	
Identification of materials <i>Identification of specified types and volumes of extractive materials to be used in restoration works</i>	Inert and non-polluting materials comprising a mixture of soils, overburden and out of specification aggregates are accommodated in the Northern Tip. This material will later be moved to the southern margin of the quarry and stored within the newly created void	

Time period of use <i>Time periods for use of specified extractive materials</i>	Indefinite (and in excess of three years). All extractive waste is to be returned to the quarry void at the cessation of activities
Use as part of the Overall Operation <i>Confirmation that the specified extractive materials are:</i> <i>(i) suitable for use;</i> <i>(ii) do not need further processing, and</i> <i>(iii) that their use in restoration is an integral part of the overall operation</i>	Stripped soils, overburden and out of specification aggregates are currently stored in the northern Tip. This material will later be moved to the southern margin of the quarry and stored within the newly created void The specified extractive materials are suitable for use, do not further processing and will form part of the site's restoration
No risk of pollution <i>Confirmation that use of the extractive materials will not result in a risk to surface water or groundwater</i>	All extractive materials are 'inert and non-polluting' and effectively pose no environmental risk.
Necessity and Lawfulness of Use <i>Confirmation of the necessity of use and lawfulness of the use of the specified extractive materials</i>	The current northern tip was created under the site's current planning permission. The new application shows the final proposed landform for this tip after it is moved to the newly created quarry void.
<p>I have reviewed the Extractive Materials Management Questionnaire and all of the supporting documentation referred to and I can confirm that the information provided will enable the local authority/agency to make a determination in respect of the appropriate management of the site in question so as to comply with the provisions of SI 556 of 2009 and that the Operator is aware of the need to assemble information which may be inspected by the local authority for such purposes</p> <p>Signature of Compiler: Date: 24/04/2019</p>  <p>Name of Compiler: Qualifications Michael Williams MGeol (Hons), MSc, MCSM, C.Geol, Eur.Geol, (Senior Engineering Geologist) FGS, MIQ Undertaken by QuarryDesign on behalf of Keegan Quarries</p>	

Appendices:

Current Survey: 190424-Dwg-01

Final Development: 190424-Dwg-02



WF1: Stripped Soils, Overburden
and out of Specification Aggregates
Net volume : ~338,000m³



Trammon

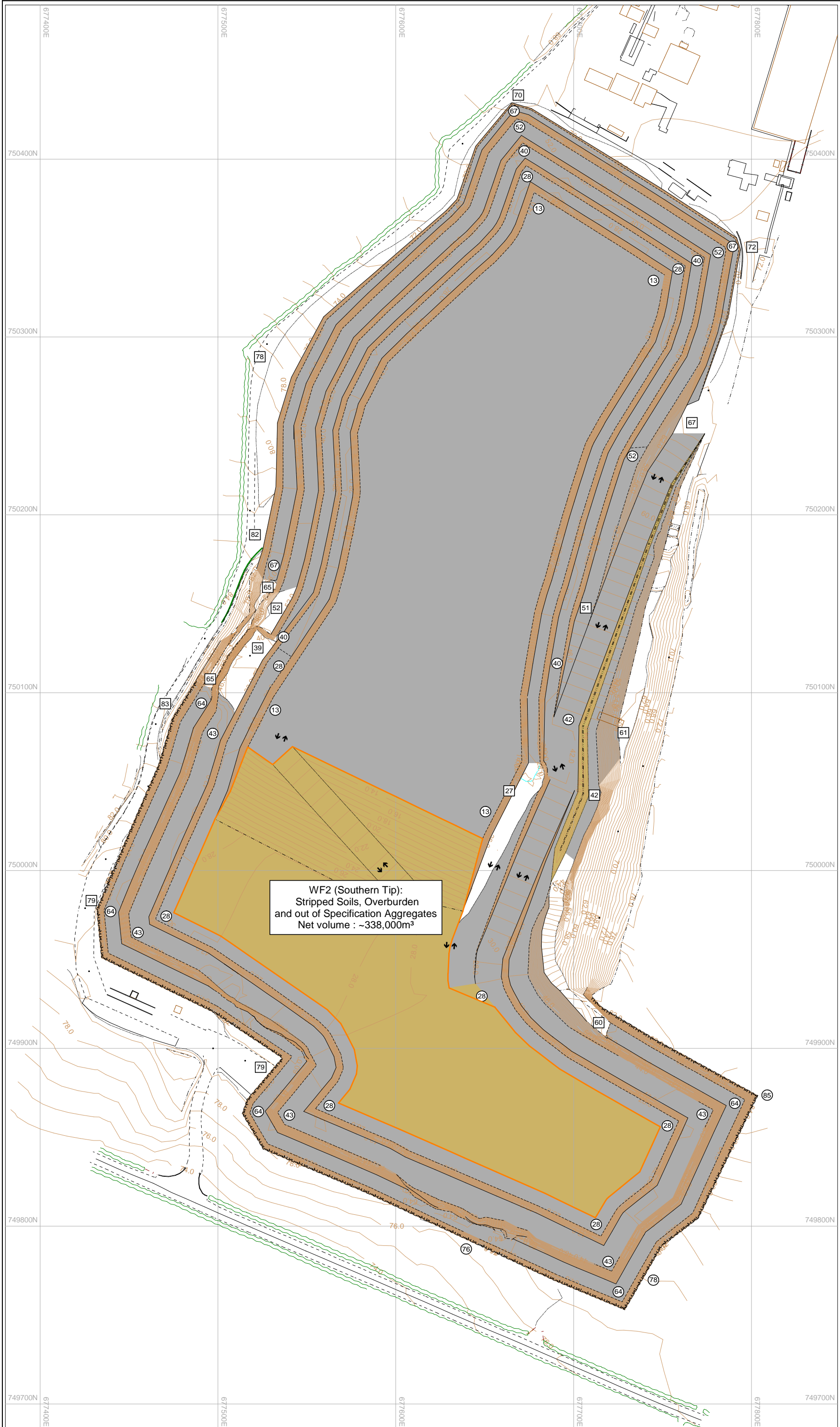
**Mine Waste Plan
Current Survey**

Drawn By
MSw

Scale
1 : 2000

Dwg N°
190424-Dwg-01

Paper Size
A3



WF2 (Southern Tip):
Stripped Soils, Overburden
and out of Specification Aggregates
Net volume : ~338,000m³



Trammon

**Mine Waste Plan
Final Development**

Drawn By
MSw

Scale
1 : 2000

Dwg N°
190424-Dwg-02

Paper Size
A3